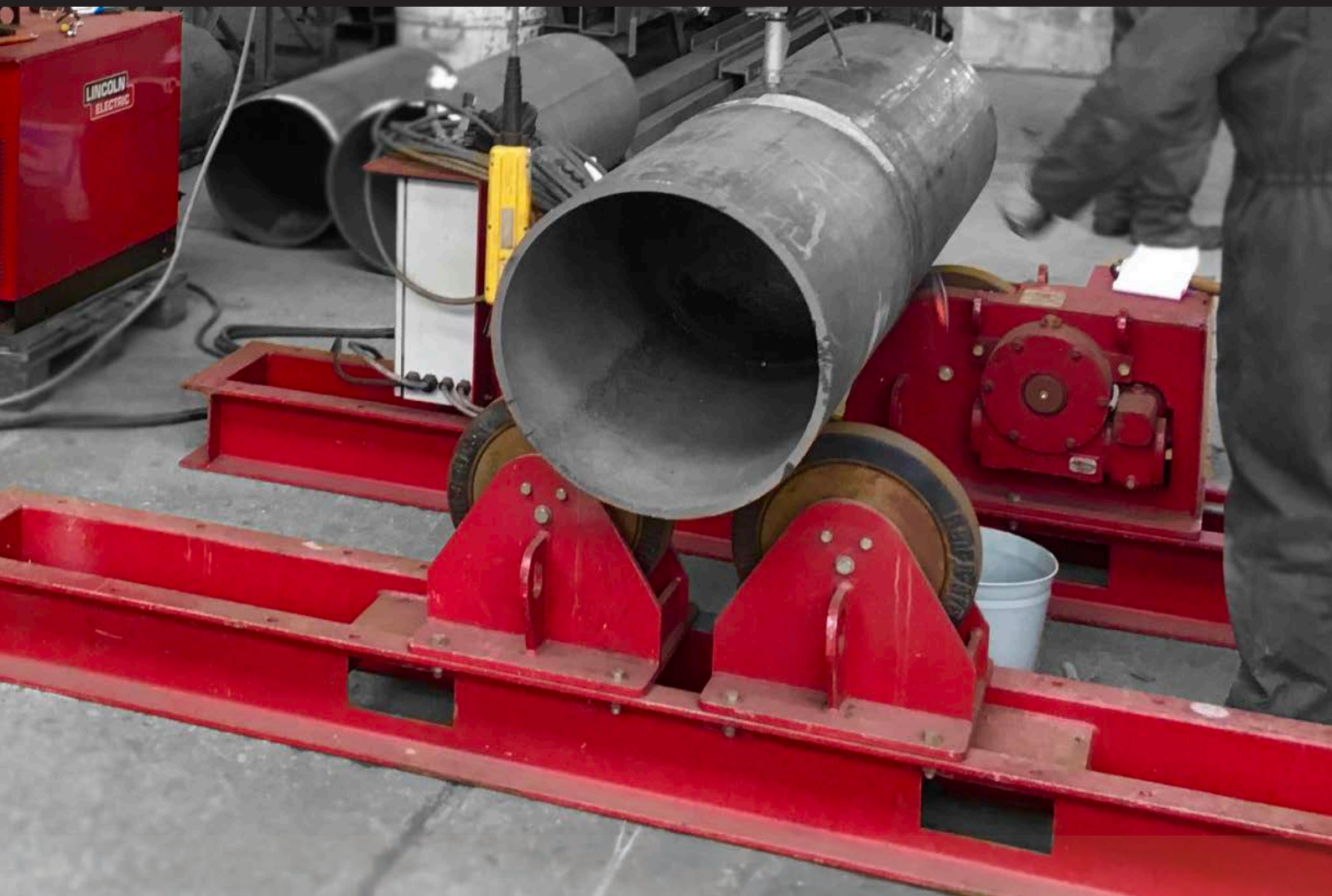








SPECTRUM

WELDING SUPPLIES

HIRE • SALES • REPAIR • REFURBISH



SPECTRUM 10 TONNE CONVENTIONAL ROTATOR SET

 10 TONNE CAPACITY  380-480V  350mm  5000mm

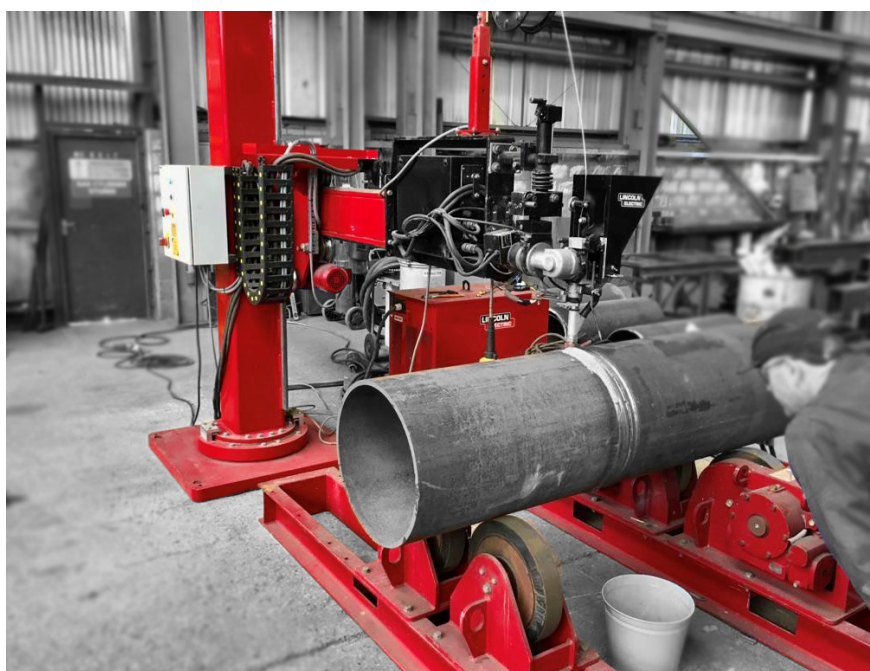
T 01246 205 267 E info@spectrumweldingsupplies.co.uk W spectrumweldingsupplies.co.uk



SPECTRUM 10 TONNE CONVENTIONAL ROTATOR SET

DRIVE
& IDLER

Model	Conventional Rotator Set (Drive and Idler)
Safe Working Load - Drive Unit	5 tonne
Safe Working Load - Idler Unit	5 tonne
Maximum Load Carrying Capacity - Set	10 tonne (1 Drive & 1 Idler)
Rotation Capacity, Drive Unit	15 tonne
Wheel Centre Distance	18.9, 30.7, 42.5, 66.1, 89.8in (480, 780, 1080, 1680, 2280mm)
Vessel Diameter Capacity	13.8in to 196.9in (350mm to 5000mm)
Rotation Speed Range	5.5 to 55.1in/min (140 to 1400mm/min)
Tyre Type	Polyurethane, 95A durometer shore rating
Wheel Size	15in diameter x 3in wide (381mm x 76mm)
Overall Height to Top of Tyre	24.6in (625mm)
Remote Pendant Type	Plug & socket five push button control (forward/stop/reverse/speed control/e-stop), 50ft (15m) cable
Rotation Drive Motors	2 x 0.55kW
Primary Input Power	110 V.1 Phase or 380/480 V, 50/60Hz (optional)
Input Current at Rated Load	7.3amp (110 V) or 5.5amp (380/480 V)
Overall Length & Width - Drive	112.2in x 24in (2850mm x 610mm)
Overall Length & Width - Idler	112.2in x 16.1in (2850mm x 410mm)
Weight - Drive	1488lb (675kg)
Weight - Idler	882lb (400kg)





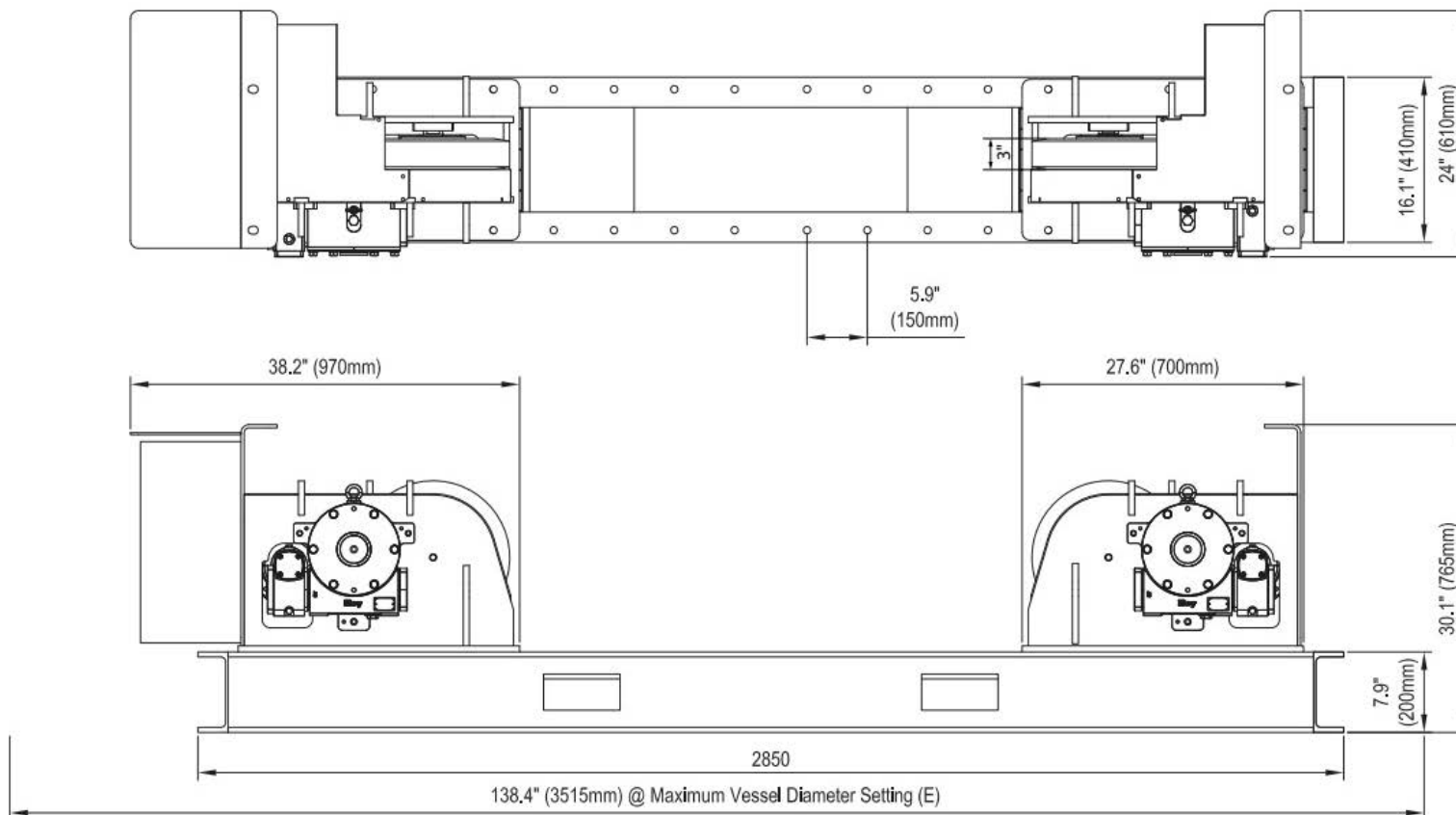
SPECTRUM
WELDING SUPPLIES

T 01246 205 267
E info@spectrumweldingsupplies.co.uk
W spectrumweldingsupplies.co.uk

SPECTRUM 10 TONNE CONVENTIONAL ROTATOR SET

DRIVE
& IDLER

Drive Rotator

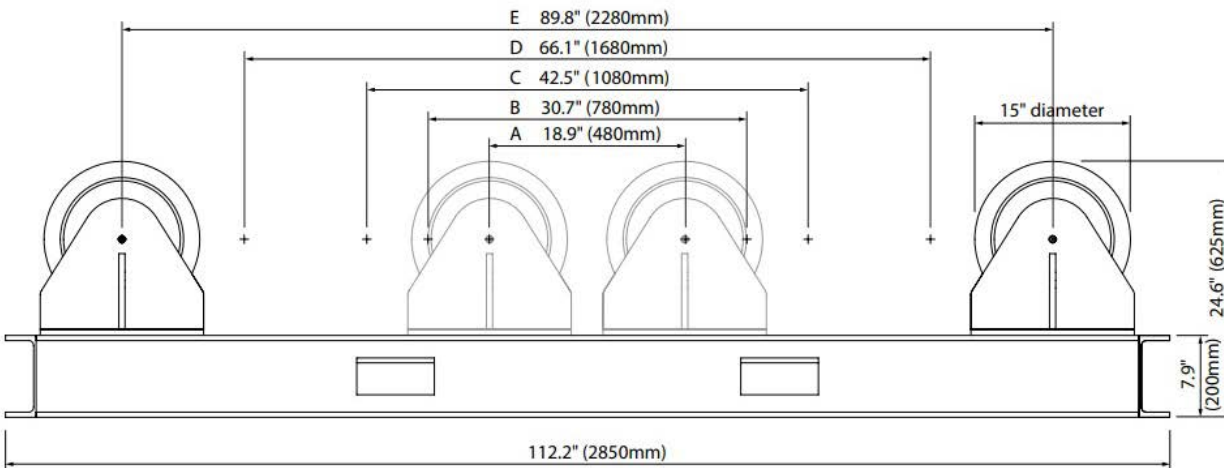




SPECTRUM 10 TONNE CONVENTIONAL ROTATOR SET

DRIVE
 & IDLER

Idler Rotator



Wheel Setting Workpiece Diameter Range

Setting	Range
A	13.8" (350mm) - 31.5" (800mm)
B	31.5" (800mm) - 55.1" (1400mm)
C	51.2" (1300mm) - 86.6" (2200mm)
D	86.6" (2200mm) - 141.7" (3600mm)
E	126" (3200mm) - 196.9" (5000mm)

Symbols

- Load capacity
- Supply voltage
- Minimum overall diameter (mm)
- Maximum overall diameter (mm)



Spectrum Welding Supplies Ltd, Spectrum House,
McGregor's Way, Chesterfield, Derbyshire, S40 2WB

Registered Office: Spectrum House, McGregor's Way,
Chesterfield, Derbyshire, S40 2WB

Registered in England and Wales Company Registration No. 1732286

Vat Registration No. 401 5037 11