

Warrior™ Feed 304

User friendly and robust feeder



The Warrior™ Feed 304 brings you the same benefits as its partner power supply; simple functionality, rugged durability and outstanding performance for 0.8 – 1.6 mm wire. Also available in a water cooled version Warrior™ Feed 304w.

- Standard 4-roll drive provides good feedability.
- Sun-friendly display and easy-to-use controls (remote voltage, gas purge, inch wire, WFS) trigger lock, and slow run-in make configuration easy.
- Practical spool cover for use in situations when you need to protect the wire.
- Short Circuit Technology (SCT) functionality which sharpens the wire at the termination of a weld to promote better arc starts, eliminate clipping wire.

Visit esab.com for more information.

Industry

- Civil Construction
- Energy
- Industrial and General Fabrication
- Pipeline
- Repair and Maintenance
- Ship/Barge Building



Specifications	
Supply Voltage	42 VAC
Supply Frequency	50/60 Hz
Power Requirement	252 VA
Welding Output at 60% Duty Cycle	500 A
Welding Output at 100% Duty Cycle	400 A
Wire Feed Speed	1.5 – 25.0 m/min (59.0 – 984.25 in/min)
Wire Spool Capacity	18 kg (39.7 lbs)
Max Spool Diameter	300 mm (440 mm*) (12 (17*) in)
Wire Dimensions Mild Steel Stainless Steel Aluminum Cored Wire	0.6 – 1.6 mm (.023 – 1.16 in.) 0.8 – 1.6 mm (.030 – 1.16 in.) 1.0 – 1.6 mm (.040 – 1.16 in.) 0.9 – 1.6 mm (.040 – 1.16 in.)
Operating Temperature	-10° to +40°C (+14° to +104°F)
Dimensions, L x W x H	675 x 265 x 418 mm (26.6 x 10.4 x 16.5 in)
Weight	14.5 kg (31.8 lbs)
Standards	CE, CSA
Enclosure Class	IP23

* When used with adapter 0459233880

Ordering Information	
Warrior™ Feed 304	0465250880
Warrior™ Feed 304w	0465250881

Delivery Includes: Wire feeder with Drive rolls V-groove: 0.9/1.0 mm / 1.2 mm, Wire guides 0.6–1.6 mm, Instruction manual, Sticker with recommended wear parts.

Options & Accessories	
Wheel Kit, front wheels turn	0458707880
Wheel Kit, all wheels turn	0458707881
Guide Pin Extension Kit, feeder	0465508880
Strain Relief for Welding Torch	0457341881
Strain Relief bracket for Interconnection Cable set	0459234880
Lifting Eye	0458706880
Adapter For 440 mm Spool	0459233880
Quick Connector Marathon Pac™	F102440880
Trolley 4-wheel Warrior™	0465510880
Counterbalance Arm *	0458705880
Stabilizer Kit Warrior™ for CounterBalance Arm	0465509880
Remote Kit	0465451880
Remote Control M1	0459491895
Remote Interconnection Cable M1, 5 m	0459553880
Remote Adapter Kit Miggy-/ Railtrac	0465451881

* Requires Trolley and Stabilizer kit

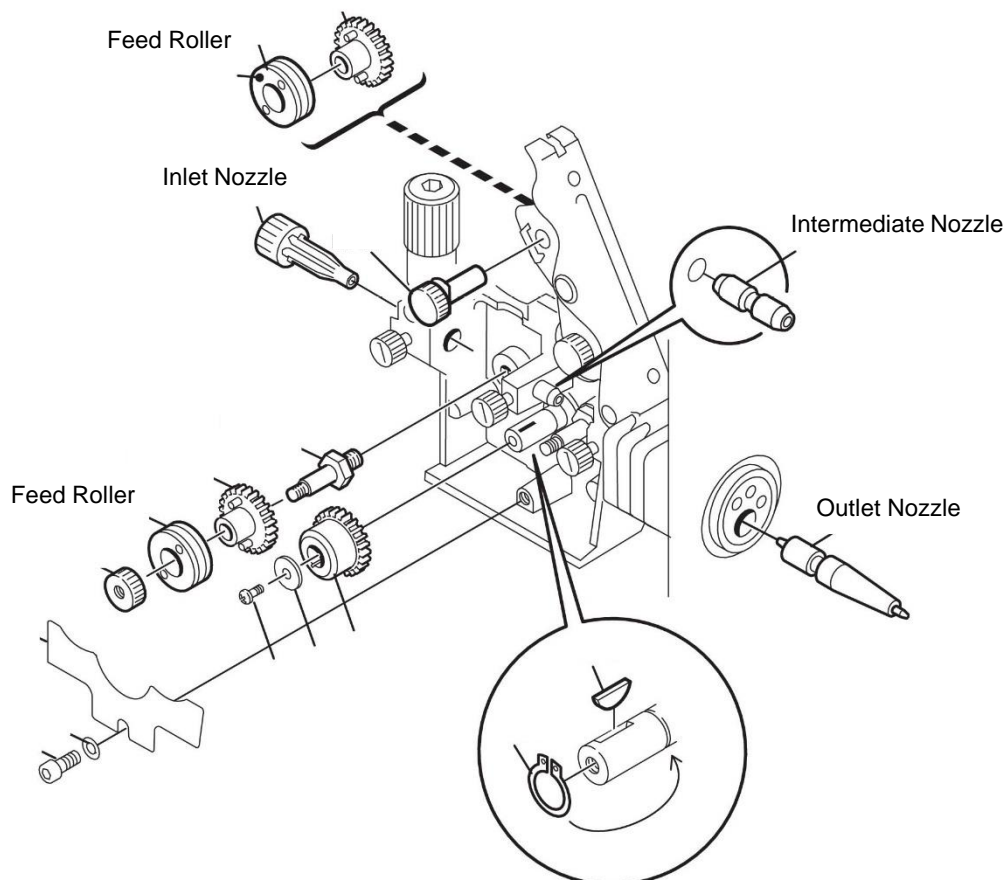
Options & Accessories

MXH™ 400w PP Torch, 6 m	0700200015
MXH™ 400w PP Torch, 10 m	0700200016
MXH™ 400w PP Torch 45°, 10 m	0700200019
MXH™ 300 PP Torch, 6 m	0700200017
MXH™ 300 PP Torch, 10 m	0700200018
MXH™ 300 PP Torch 45°, 10 m	0700200020
Interconnection Cables - 70mm2, Gas-Cooled, 2.0m	0459836880
Interconnection Cables - 70mm2, Gas-Cooled, 5.0m	0459836881
Interconnection Cables - 70mm2, Gas-Cooled, 10.0m	0459836882
Interconnection Cables - 70mm2, Gas-Cooled, 15.0m	0459836883
Interconnection Cables - 70mm2, Gas-Cooled, 25.0m	0459836884
Interconnection Cables - 70mm2, Gas-Cooled, 25.0m	0459836885
Interconnection Cables - 70mm2, Liquid-Cooled, 2.0m	0459836890
Interconnection Cables - 70mm2, Liquid-Cooled, 5.0m	0459836891
Interconnection Cables - 70mm2, Liquid-Cooled, 10.0m	0459836892
Interconnection Cables - 70mm2, Liquid-Cooled, 15.0m	0459836893
Interconnection Cables - 70mm2, Liquid-Cooled, 25.0m	0459836894
Interconnection Cables - 70mm2, Liquid-Cooled, 35.0m	0459836895
Interconnection Cables - 95mm2, Gas-Cooled, 2.0m	0459836980
Interconnection Cables - 95mm2, Gas-Cooled, 5.0m	0459836981
Interconnection Cables - 95mm2, Gas-Cooled, 10.0m	0459836982
Interconnection Cables - 95mm2, Gas-Cooled, 15.0m	0459836983
Interconnection Cables - 95mm2, Gas-Cooled, 25.0m	0459836984
Interconnection Cables - 95mm2, Gas-Cooled, 35.0m	0459836985
Interconnection Cables - 95mm2, Liquid-Cooled, 2.0m	0459836990
Interconnection Cables - 95mm2, Liquid-Cooled, 5.0m	0459836991
Interconnection Cables - 95mm2, Liquid-Cooled, 10.0m	0459836992
Interconnection Cables - 95mm2, Liquid-Cooled, 15.0m	0459836993
Interconnection Cables - 95mm2, Liquid-Cooled, 25.0m	0459836994
Interconnection Cables - 95mm2, Liquid-Cooled, 35.0m	0459836995

Wear and Spare Parts

Feed Roller V Groove for Fe/SS/C 0.6-0.8 mm	0459052001
Feed Roller V Groove for Fe/SS/C 0.8-0.9 mm	0459052002
Feed Roller V Groove for Fe/SS/C 0.9-1.0 mm	0459052003
Feed Roller V Groove for Fe/SS/C 1.4-1.6 mm	0459052013
Feed Roller V-K Groove for C 0.9-1.2 mm	0458825001
Feed Roller V-K Groove for C 1.2-1.4mm	0458825002
Feed Roller V-K Groove for C 1.6 mm	0458825003
Feed Roller U Groove for Al 0.8-1.0 mm	0458824001
Feed Roller U Groove for Al 1.0-1.0 mm	0458824002
Feed Roller U Groove for Al 1.2-1.6 mm	0458824003
Inlet Nozzle Ø 2 mm for Fe/SS/AIC 0.6-1.6mm	0156602001
Inlet Nozzle Ø 3 mm for Fe/SS/AIC 0.6-1.6mm	0455049001
Intermediate Nozzle for Fe/SS/C 0.6-1.6 mm	0455072002
Intermediate Nozzle for Al 0.8-1.6 mm	0456615001
Outlet Nozzle for Fe/SS/C 0.6-1.6 mm	0469837880
Outlet Nozzle for Al 0.8-1.6 mm	0469837881

Fe = Mild steel; SS = Stainless Steel, Al = Aluminum, C = Cored Wire
 For complete list of wear and spare parts please see the manual.



ESAB / esab.com

